



CHRIST'S LUTHERAN CHURCH  
 5330 Logan Ferry Road  
 Murrysville, PA 15668  
 (412) 795-1212

Pastor Wayne Gillespie  
 Email: [office@christsmurrysville.org](mailto:office@christsmurrysville.org)  
 Website: [www.christsmurrysville.org](http://www.christsmurrysville.org)  
 Synod Website: [swpasynod.org/](http://swpasynod.org/) ELCA Website: [elca.org](http://elca.org)

SERVICES  
 Saturday Contemporary 6:00 pm  
 Sunday Worship 10:00 am  
 Sunday School for Children & Adults 9:00am

# May ~ THE EXPRESSION ~ 2018

## From the Pastor

Early in the morning, on April 7<sup>th</sup>, heavy rains created a landslide that swept many people in our local area into chaos. People lost their homes and most of their belongings in just a matter of minutes. Residents were evacuated with only the clothes on their backs—many of them still in their pajamas. The doors of Christ Greek Orthodox Church's Olympia Hall were immediately opened, and a command center was created. Warm meals were prepared, and shelter was offered to many people who could only watch in silence as their homes were demolished and everything that they owned was encased in piles of rubble within a few short hours.

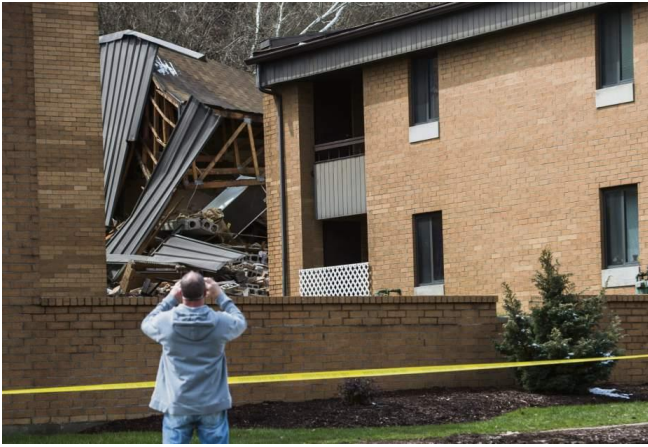


Residents of apartment buildings that did not need to be demolished were permitted to, briefly, return to their homes to collect the few belongings that they could gather—but, since that time, several of the buildings have been labeled “uninhabitable” and residents of those buildings are now permanently displaced. These apartment buildings housed many people who are senior citizens and disabled, and many low-income households. Officials are estimating that repairs will take a minimum of eight months to complete.

Mission-Partnerships are very important in times like these because most of us, as individuals, don't have the financial resources and the specific skills and talents to make long-term and lasting impact in situations like this. And that's why we work together as the body of Christ. We join hands with each other—looking past the walls of our buildings, looking past our denominational differences, and even looking past lines we've drawn to identify different communities—and we do God's work in the world.

We've been asked to join hands with congregations, who are working as a Team, to accomplish God's vision and mission for the Church by pulling together and by offering our support and care to people in our area who've lost their homes and belongings. We, at Christ's Lutheran Church, proclaim that part of God's vision and mission for our congregation is to “Listen and Care,” and this is a great opportunity to join hands with Christians in our community (and even around the world) to do what God's calling us to do—both as a congregation and vital part of the Church of Jesus Christ as a whole.





We are going to be collecting money that will be used to purchase gift cards that will be distributed to those whose lives have been affected by recent landslides in our local area—during the month of May.

Money that we collect during the month of May will be sent to Christ Greek Orthodox Church and it will be added to funds that have been collected by other Mission-Partners throughout our area. The funds will, then, be distributed to displaced residents in the form of gift cards that they can use to purchase items that they need from local businesses. We are partnering

with other local churches and with businesses in our local area to do things that none of us could do by ourselves. That's the power of Mission-Partnerships. When we work together in ways that aren't limited by the walls of our buildings and the lines that we've drawn between communities, we can accomplish great things and fulfill God's vision and mission for the Church together.



We're going to make it easy for you to join hands with us as we work together to help displaced residents in our local area, too.

You can simply add your contribution to this important ministry by including it in your regular offering envelope as a part of your weekly offering. All that we are asking you to do is to designate your gift on the "other" line that's already found on your offering envelope.

You can, also, support this ministry through an electronic gift. You can visit our church's newly updated website at [www.christsmurrysville.org](http://www.christsmurrysville.org) and support this ministry by using the "give now" link that you'll find at the bottom of the home page. Just remember to enter the amount that you want to contribute in the "other" fund option and let us know that you're contributing to the "Rt 30 Landslide" fund.

You can, mail a check that's written to "Christ's Lutheran Church." Please send your check to: Christ's Lutheran Church, 5330 Logans Ferry Road, Murrysville, PA 15668. If you send us a check, please be sure to tell us that you want us to include your contribution in the "Rt 30 Landslide" fund on the memo line of your check. We will make sure that your money is sent to the proper place.

You can, also, text **CLC4ALL** to **77977** on your cellphone and send your support in that way.

God's vision and mission for our world is one that calls us into action in many ways, and this chance to join hands with other Mission-Partners who are working together to support many people whose lives were disrupted by an early-morning landslide is a great chance for us to demonstrate how We Listen and Care.

Every gift makes a difference! Every dollar you contribute will be used to purchase gift cards that senior citizens, disabled residents, and low-income households can use at local businesses as they begin to re-build their lives after this devastating event. We can do more when we join hands with our Mission-Partners than we can ever hope to do by ourselves. Let's prove it!

***Yours in Christ's love and faithfulness, ~ Pastor Wayne***